



Brian Bigbie
Economic Development Manager
Tulsa Ports



Caleb Deck
Sustainability Lead
FSB Architects and Engineers



Matt Villareal
Founder & CEO
Infinite Composites Inc.



Brian Bigbie

**Economic Development Manager
Tulsa Ports**

Brian Bigbie is the Economic Development Manager at Tulsa Ports. As a member of the economic development team, Brian is responsible for managing special projects, the development of federal grant projects, developing legislative strategies, and serves as the point person for Tulsa Ports RFP project submissions.

Prior to joining Tulsa Ports, he worked at the Indian Nations Council of Governments (INCOG) for 5 years as the Principal Economic Development Planner and was responsible for managing the 5-Year Comprehensive Economic

Development Strategy. Brian worked closely with public and private entities to develop regionally significant economic development projects helping to secure over \$15 million in federal awards to support these projects. Prior to his time at INCOG, Brian worked for the Deputy Director's office at the Oklahoma Department of Transportation for over 5 years serving as a legislative analyst and working on special projects. Brian's earlier work includes working for the Embassy of Papua New Guinea in Washington DC and working for Oklahoma Governor Brad Henry.

Brian has a Master's degree from The University of Oklahoma in Norman and a Bachelor's degree from NSU in Tahlequah. He enjoys spending time with his family, being outdoors, listening to music, visiting new places, taking on new challenges, following international relations and markets, playing sports, and watching and attending sporting events, especially the Oklahoma Sooners.

TULSA PORTS

BARGE · RAIL · INDUSTRIAL PARK

CATOOSA · INOLA



TRBA SUMMIT 2024
OKLAHOMA'S NEW ENERGY ECONOMY

5350 Cimarron Road | Catoosa, OK 74015 | 918.266.2291 | tulsaports.com

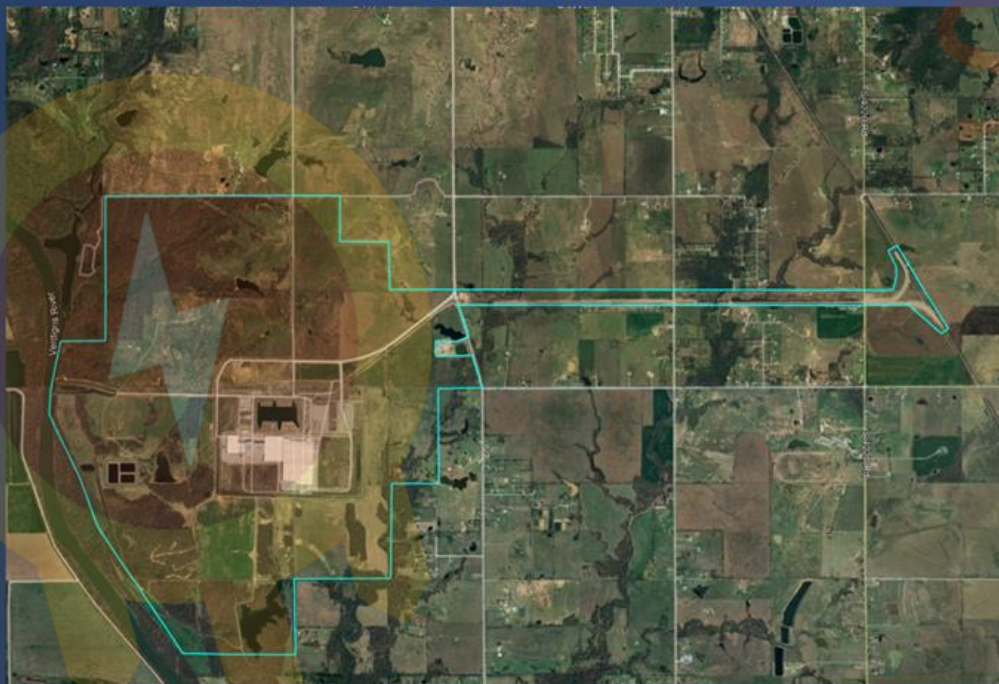


TULSA PORTS

BARGE · RAIL · INDUSTRIAL PARK

CATOOSA · INOLA

TULSA PORT OF INOLA



TULSA PORT OF CATOOSA





THE WORLD SHIPS THROUGH **OUR** WATERWAYS



RAIL



- Shortline railroad wholly owned by Tulsa Ports and operated by Watco Companies
- Directly connects an industrial park with 2,200 available acres to the Union Pacific Railroad
- Future transload capabilities on site provided by Watco Companies
- All utilities provided at Tulsa Port of Inola at industrial scale or greater



918.266.2291 | tulsaports.com | info@tulsaports.com

City of Tulsa-Rogers County Port Authority

- Non-appropriated entity of the State of Oklahoma created by the Port Authority Act
- 9-Member Board of Directors (appointed)
- Wholly owned subsidiary – Facilities Authority
- Self-sustaining through land leases/sales and transportation services revenue





OUR VISION IS TO TRANSFORM TULSA INTO A BEST-IN-CLASS HUB FOR ADVANCED MOBILITY

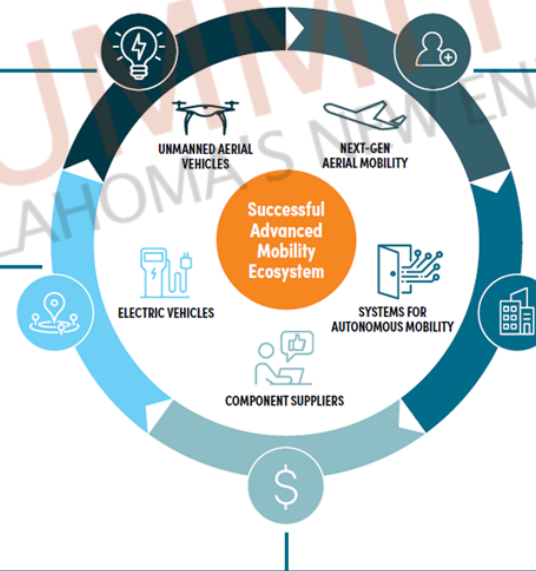
Our multi-faceted coalition aims to leverage Tulsa's unique assets to engage partners in Advanced Mobility

CREATING AN INNOVATION PIPELINE

Tier-1 research center and 114 nautical mile commercial-scale beyond visual line of sight (BVLOS) testing corridor

BUILDING A COMMUNITY

Thriving ecosystem of industry and academic partners across advanced ground and air mobility



DEVELOPING AND ATTRACTING WORKFORCE

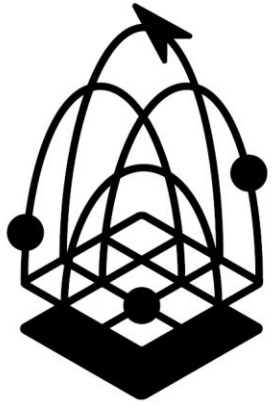
Targeted training programs to build the talent pipeline for Advanced Mobility

ENGAGING AND ATTRACTING EMPLOYERS

Infrastructure for large shovel-ready industrial sites for Advanced Mobility players to expand and grow

ATTRACTING CAPITAL TO SUPPORT INNOVATION COMPANIES

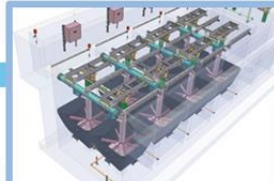
Supporting entrepreneurs and innovators to launch and scale new companies



TRAM



What are we building?



Industrial Filtration

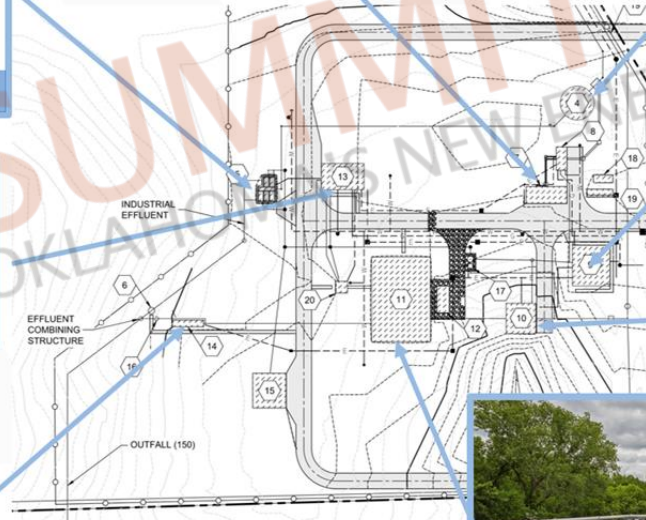


Dewatering



UV Disinfection

Chemical Systems



EQ Tank



Admin/Lab



Headworks



Packaged Wastewater Treatment

BURNS  **MCDONNELL**

Brian Bigbie
Economic Development
Tulsa Ports

O: 918.202.7707

C: 405.243.8370

E: brian@tulsaports.com

tulsaports.com/locate-here



TULSA PORTS

BARGE · RAIL · INDUSTRIAL PARK

CATOOSA · INOLA

5350 Cimarron Road | Catoosa, OK 74015 | 918.266.2291 | tulsaports.com



Caleb Deck
Sustainability Lead
FSB Architects and Engineers

Caleb Deck is the Sustainability Lead at FSB Architects and Engineers in Oklahoma City. He has been with FSB for 8 years. His role consists of overseeing energy modeling for commercial and industrial buildings and leading the internal and external sustainability efforts at FSB. Caleb graduated from Oklahoma State University with a BS in Mechanical Engineering and minor in Entrepreneurship. After gaining professional licensure in 2020, Caleb and his family moved to England for a year to pursue a MPhil at the University of Cambridge in Engineering for Sustainable Development while also gaining accreditations in LEED and WELL AP building design. He serves on the board of governors and cochairs the governmental affairs committee for ASHRAE, is an active member of the local chapter of Urban Land Institute, and acts as a juror for design studios within OSU's School of Architecture. Caleb has been married to Delaney (Nash) Deck for 9 years and has two sons, Anderson (6 years) and Kit (2 years). Caleb unabatedly loves reading, soccer, basketball, and any way sports/data/statistics combine.

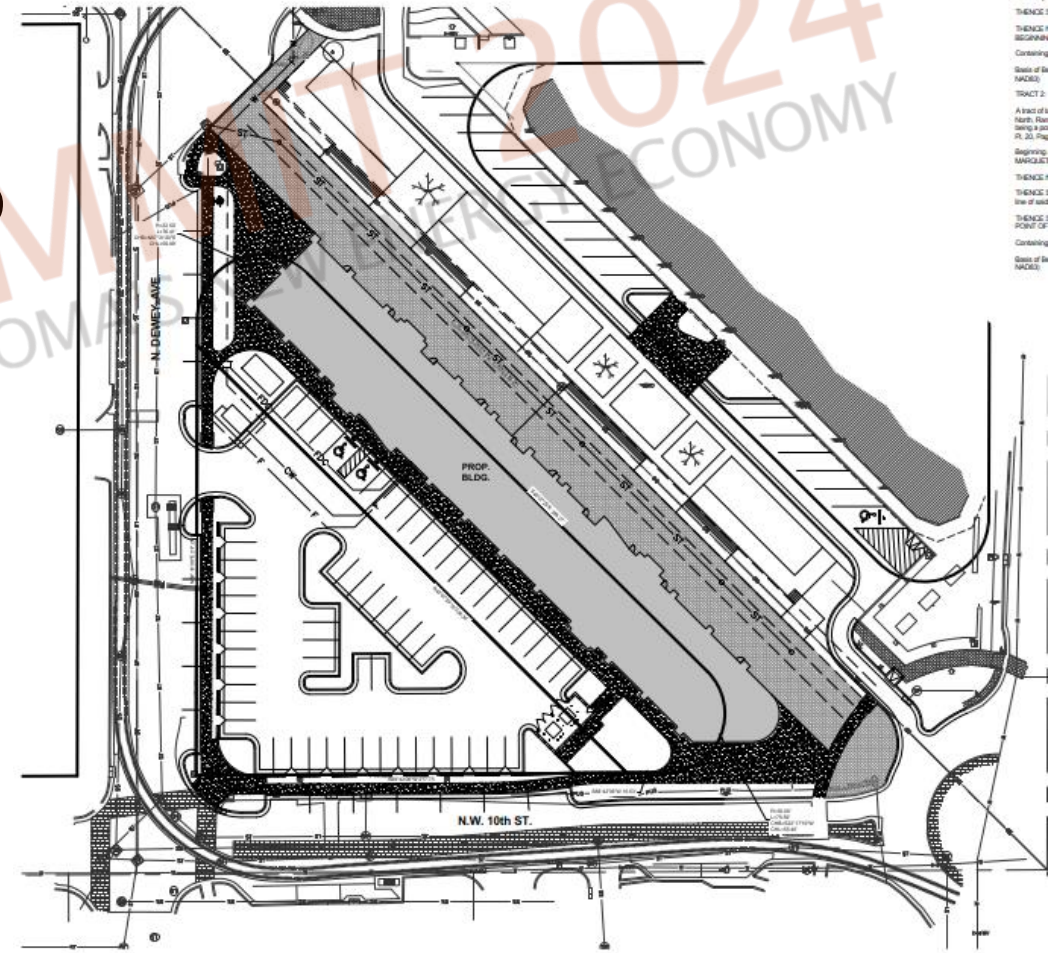
What NOT to do...

- Looking only at short-term first cost
- Ignoring renewables.
- Miserable indoor environment.



Renewable energy integration

- Project with geothermal and solar array on roof and parking lot.
- Difficulty with EPA but TIF looking to revive the project.



Sheet to a p.p.
TRINCE 1
TRINCE 1
CONCRETE
Base of 1st
FLOOR
TRACT 2:
A tract of a
North Platte
County, Okla.
Plat No. 10, 11
Survey
MAY 1881
TRINCE 1
Line of road
TRINCE 1
POINT OF
CONCRETE
Base of 1st
FLOOR

Energy Savings through Envelope

Upgrades + PV

- Analyzed impact of improved windows.
- Increased window cost by ~\$20k, were able to downsize mechanical equipment and save ~\$30k upfront, plus electrical and structural.



ency.





Matt Villareal
Founder & CEO
Infinite Composites Inc.

Robert “Matt” Villareal is an entrepreneur and inventor from Dallas, Texas, who founded Infinite Composites Inc. in 2010 while attending Oklahoma State University. The company, now located in Tulsa, OK specializes in designing and manufacturing linerless composite pressure vessels for high-pressure gas storage in various sectors, including aerospace, defense, and transportation. Villareal is the lead inventor on eight patents, in composite pressure vessels and additive manufacturing. He has co-authored numerous technical publications on additive manufacturing and liner-less all-composite tanks, and he has presented at conferences like CAMX, AIAA, and SAMPE.



INFINITE
COMPOSITES

ENABLING THE HYDROGEN ECONOMY
ON EARTH AND BEYOND



GENERATION



PROJECTS

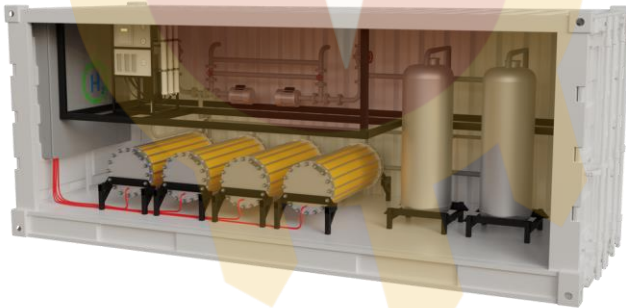
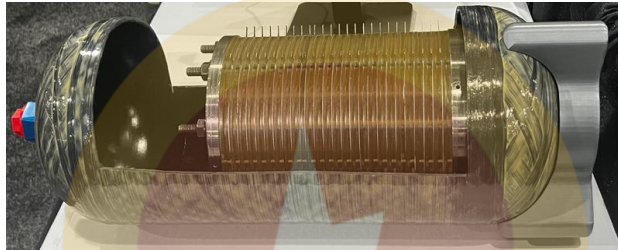
Center for the Advancement
of Science & Technology

DISTRIBUTION



U.S. ARMY

TRANSPORTATION





INFINITE
COMPOSITES

ENABLING THE HYDROGEN ECONOMY
ON EARTH AND BEYOND

**AVIATION
PROJECTS**



SKYDWELLER
Perpetual Flight™



U.S. AIR FORCE



**UNMANNED
AIRCRAFT**



**PASSENGER
AIRCRAFT**



TRBA SUMMIT 2024
OKLAHOMA'S NEW ENERGY ECONOMY



INFINITE
COMPOSITES

ENABLING THE HYDROGEN ECONOMY
ON EARTH AND BEYOND

VEHICLES

SPACE
PROJECTS

INFRASTRUCTURE

BLUE ORIGIN

 **space**



POWER to HYDROGEN

